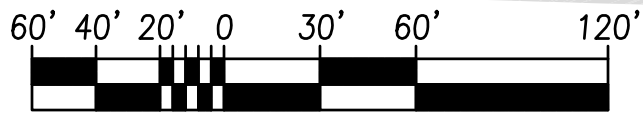
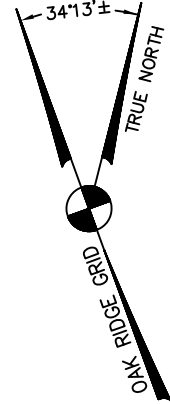
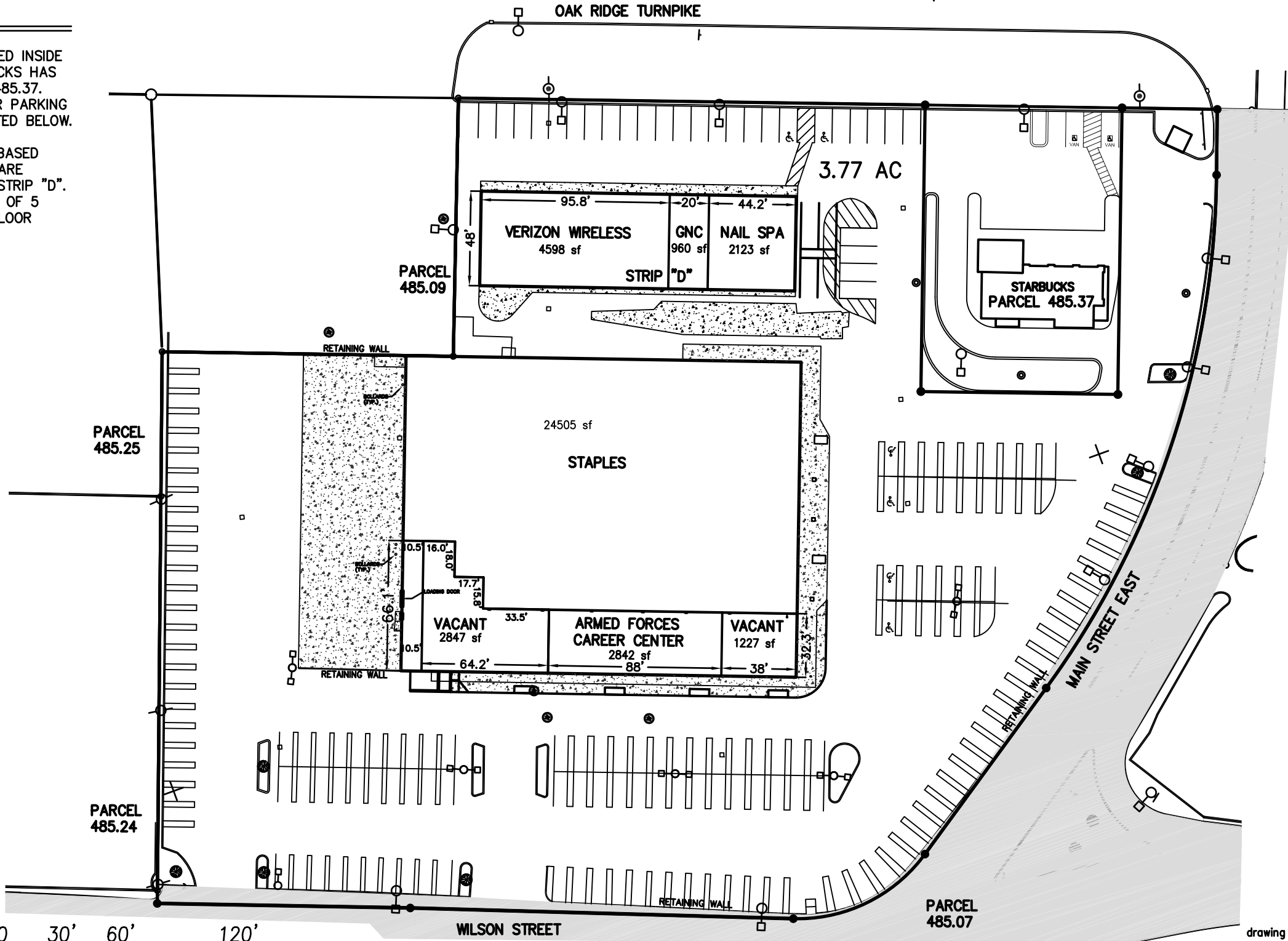


NOTES

- 1. 187 EXISTING PARKING SPACES COUNTED INSIDE THE PROPOSED LOT/PARCEL. STARBUCKS HAS SUFFICIENT PARKING WITHIN PARCEL 485.37. NEITHER THE STARBUCKS BUILDING OR PARKING WERE INCLUDED IN THE NUMBERS LISTED BELOW.
- 2. 180 PARKING SPACES ARE REQUIRED BASED ON 90% OF THE TOTAL BUILDING SQUARE FOOTAGE OF STAPLES BUILDING AND STRIP "D". (USING THE REQUIRED PARKING RATIO OF 5 SPACES PER 1,000 S.F. OF USABLE FLOOR SPACE.)



SCALE: 1" = 60'

drawing number
LP-1

**LEASE PLAN
STAPLES STRIP CENTER
OAK RIDGE CITY CENTER
OAK RIDGE, TENNESSEE**

issue	drawn	checked	approval	file dwg. no.
original	NMP		NMP	10718LP
R-1	NMP		NMP	
R-2	NMP		NMP	
				job no. 10718
				field book no. -

**COAL CREEK
SURVEYING & ENGINEERING**

Noel M. Peterson, P.E., P.L.S.

224 Echo Valley Road
Rocky Top, Tennessee 37769

(865) 323-6994
fax (865) 426-9078