

# NOW LEASING

*Jacksonville, FL*

O C E A N W A Y P L A Z A



— ··· ··· ··· —

Anchored by Winn Dixie

...

57,376sf Gross Leasable Area

Fletcher Bright Company  
423-755-8830

# NOW LEASING

*Jacksonville, FL*

## OCEANWAY PLAZA

Oceanway Plaza is located in  
Jacksonville, FL, just off I-295  
at the intersection of  
N Main Street & New Berlin Road

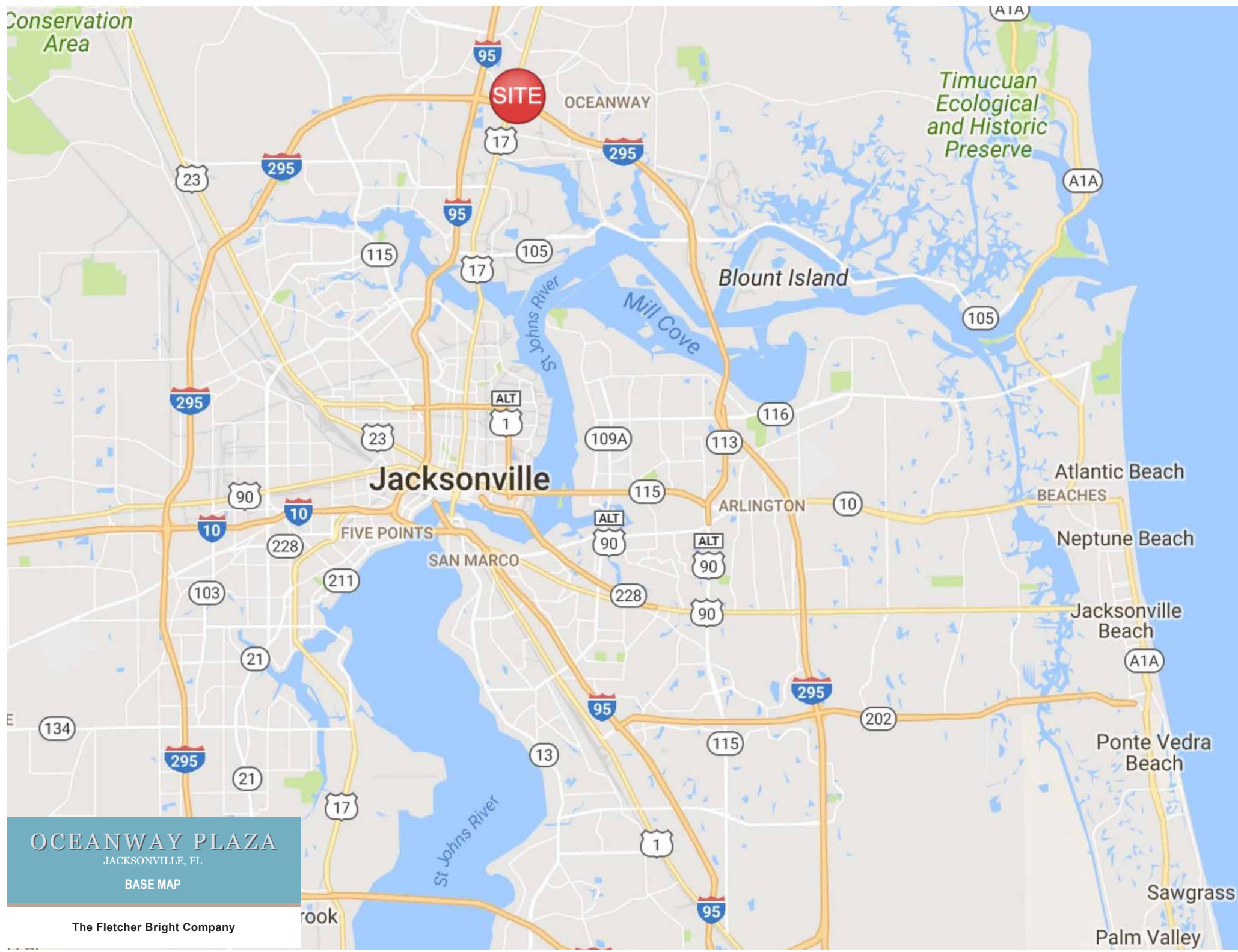
Anchored by Winn Dixie

57,376sf Gross Leasable Area

**FOR LEASING INFO CALL JONES GRAHAM: 800-446-3289**

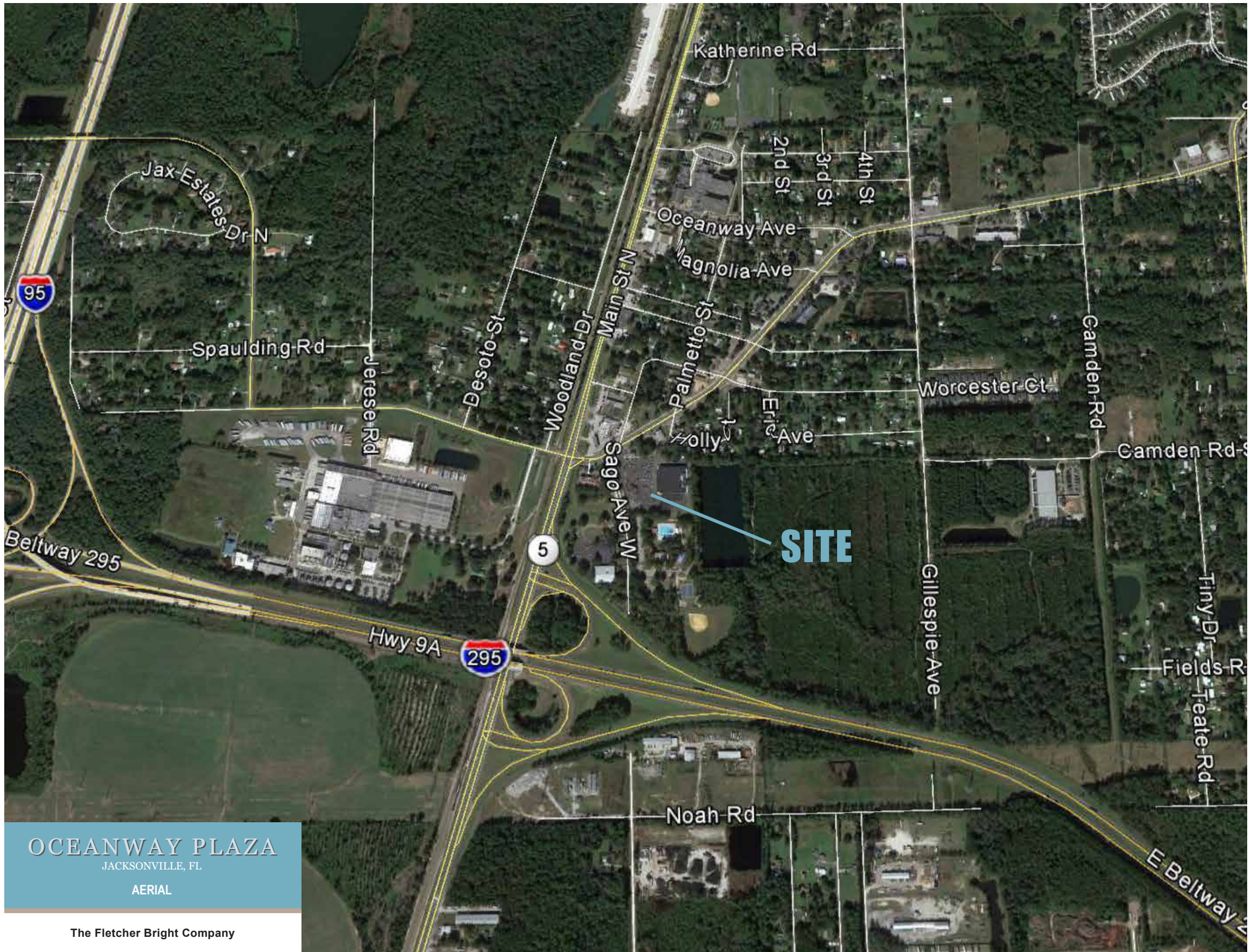
<http://www.fletcherbright.com/shopping-centers/fl/105>

[www.fletcherbright.com](http://www.fletcherbright.com)



OCEANWAY PLAZA  
JACKSONVILLE, FL  
BASE MAP

The Fletcher Bright Company

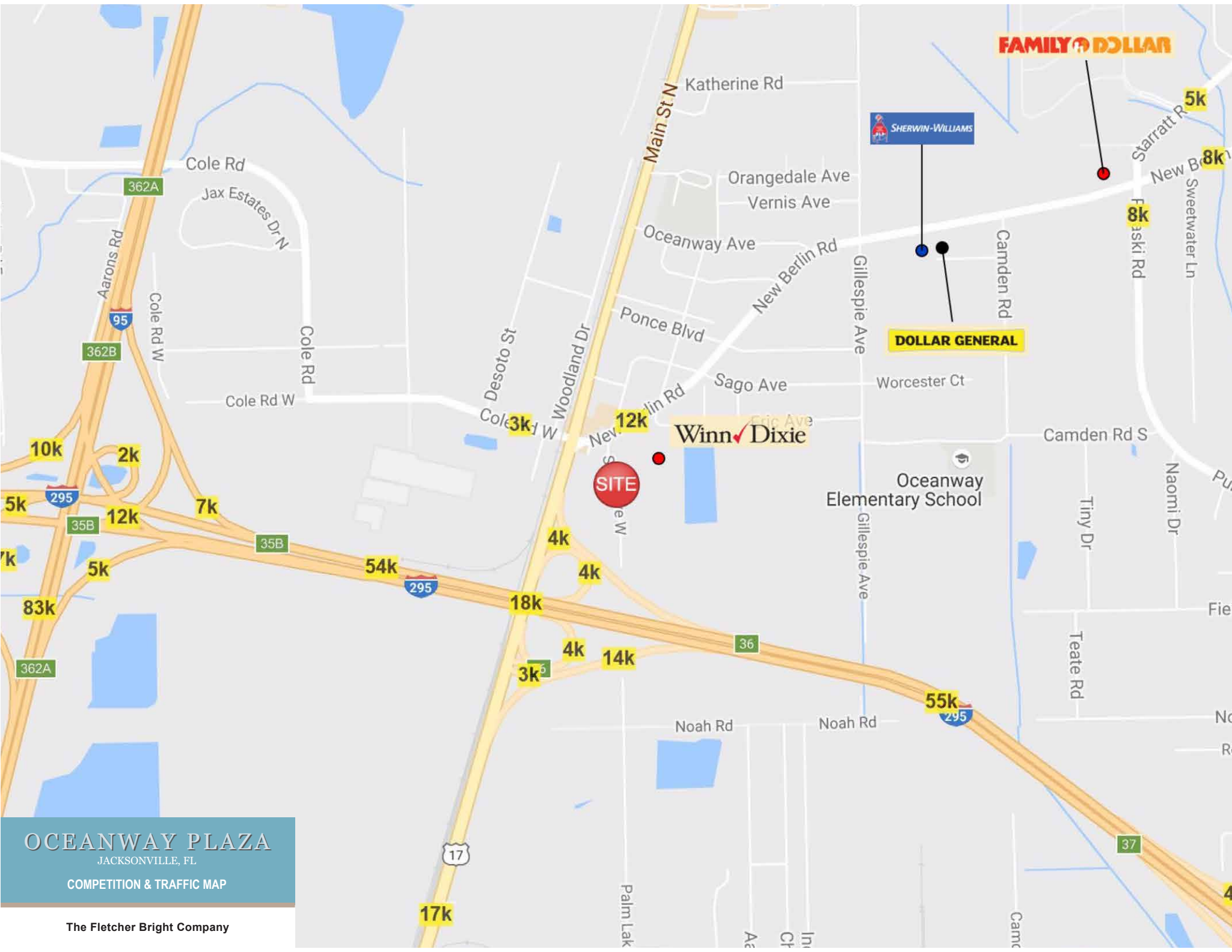


# OCEANWAY PLAZA

JACKSONVILLE, FL

AERIAL

The Fletcher Bright Company



**OCEANWAY PLAZA**  
JACKSONVILLE, FL  
COMPETITION & TRAFFIC MAP

# AREA INFO

*Jacksonville, FL*

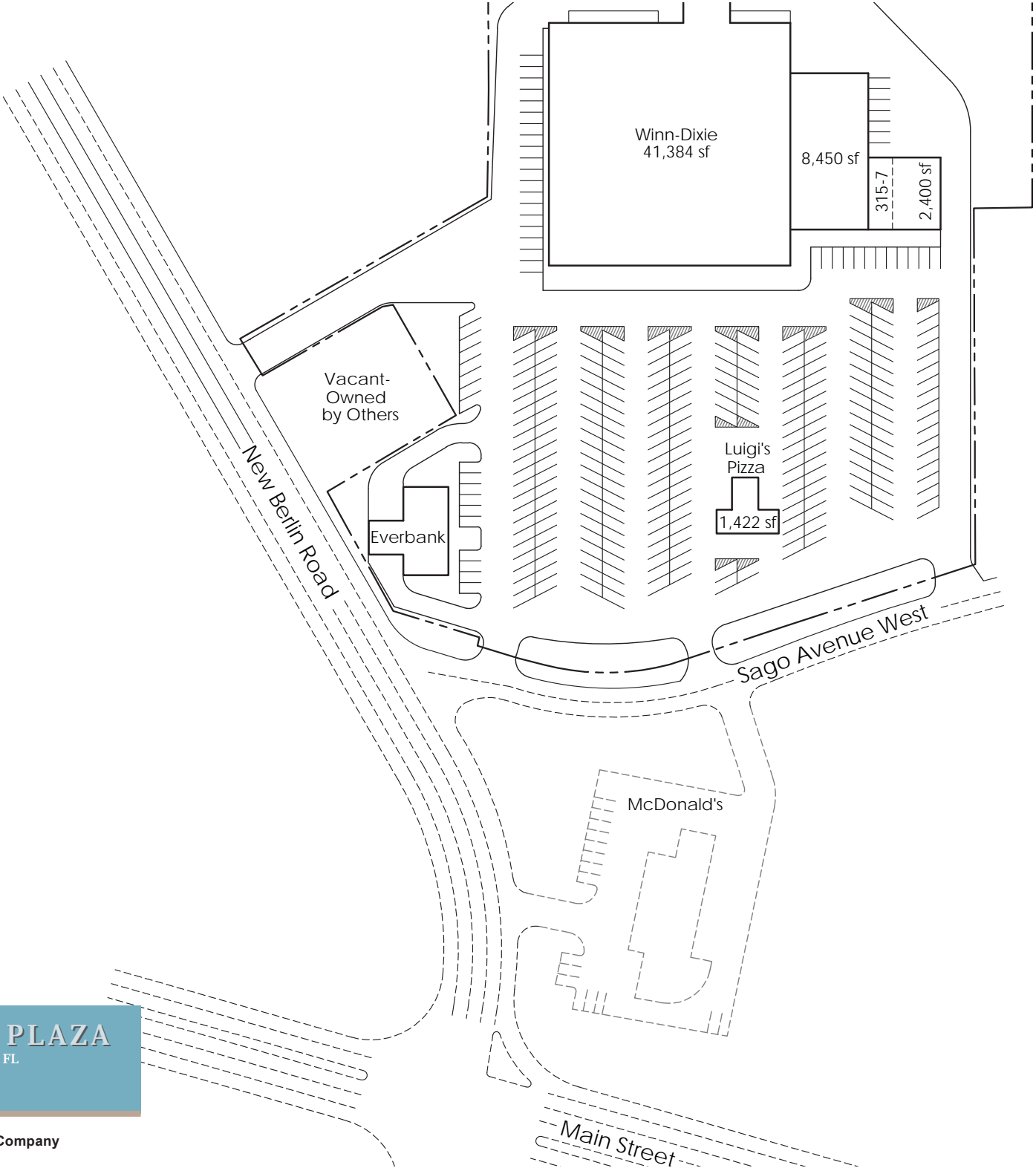


	1 Mi Ring	3 Mi Ring	5 Mi Ring
2016 Population	2,319	30,466	63,678
2016 Households	890	11,606	24,180
2016 Avg HH Income	\$72,888	\$66,912	\$66,674

12309 Sago Ave W, Jacksonville, Florida, 32218

**OCEANWAY PLAZA**  
JACKSONVILLE, FL  
SITE PLAN

The Fletcher Bright Company



This is a preliminary site plan subject to modification by the developer.

# AREA INFO

## *Jacksonville, FL*

---

### ABOUT

Jacksonville, the largest city in area in the continental United States, is a rapidly growing metropolitan city in Northeast Florida, with approximately 850,000 residents. Under its strong mayor form of government, residents elect a mayor and a 19-member City Council, with five at-large members and 14 members elected by district. Lenny Curry is Jacksonville's 8th mayor since the consolidation of Duval County and City of Jacksonville governments in 1968.

Due to its convenient location, mild climate, reasonable cost of living, high quality of life and a business-friendly government, Jacksonville is a popular location for corporate expansions and relocations. Its status as an intermodal transportation hub is another incentive, and the city is also a leading distribution center, with a transportation network embracing port and air cargo facilities, rail and trucking routes. Millions of tons of raw materials and manufactured goods move through the city annually.

<http://www.coj.net/about-jacksonville.aspx>

### JAXUSA PARTNERSHIP

JAXUSA Partnership supports economic development in the Northeast Florida region, comprised of seven unique and thriving counties – Baker, Clay, Duval, Flagler, Nassau, Putnam and St. Johns.

With more than 1.6 million residents, the area boasts a diverse talent pool and economic base. We have one of the fastest growing technology sectors, a thriving health and life sciences community, and a well-established logistics and distribution industry. The region also has more than 20 institutions of higher learning.

Learn more about each county's distinctive assets, then contact one of our economic development experts to discover which location in the region best suits your business needs.

<http://jaxusa.org/the-region>