



Delaware West

shopping center is
located in McComb, MS
on Delaware Avenue
not far from the City
central business district

Address

1211 Delaware Ave
McComb, MS 39648

Leasing Information:

Jones Graham
800-446-3289



*Delaware
West*

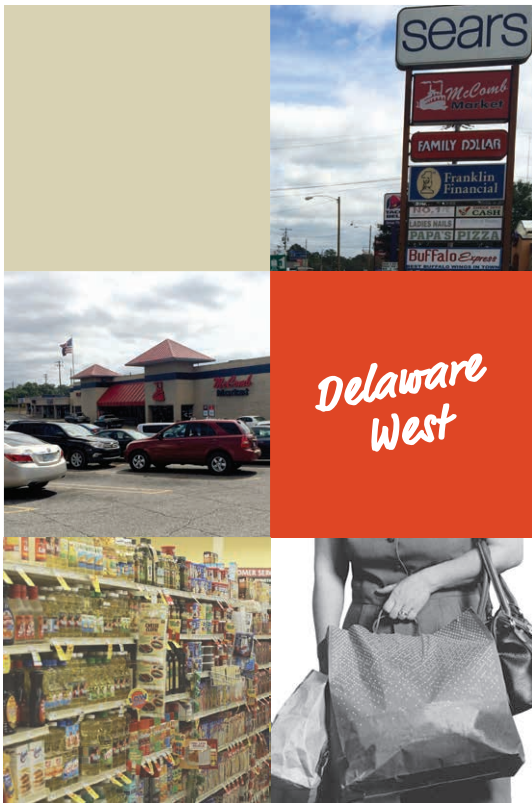


sears

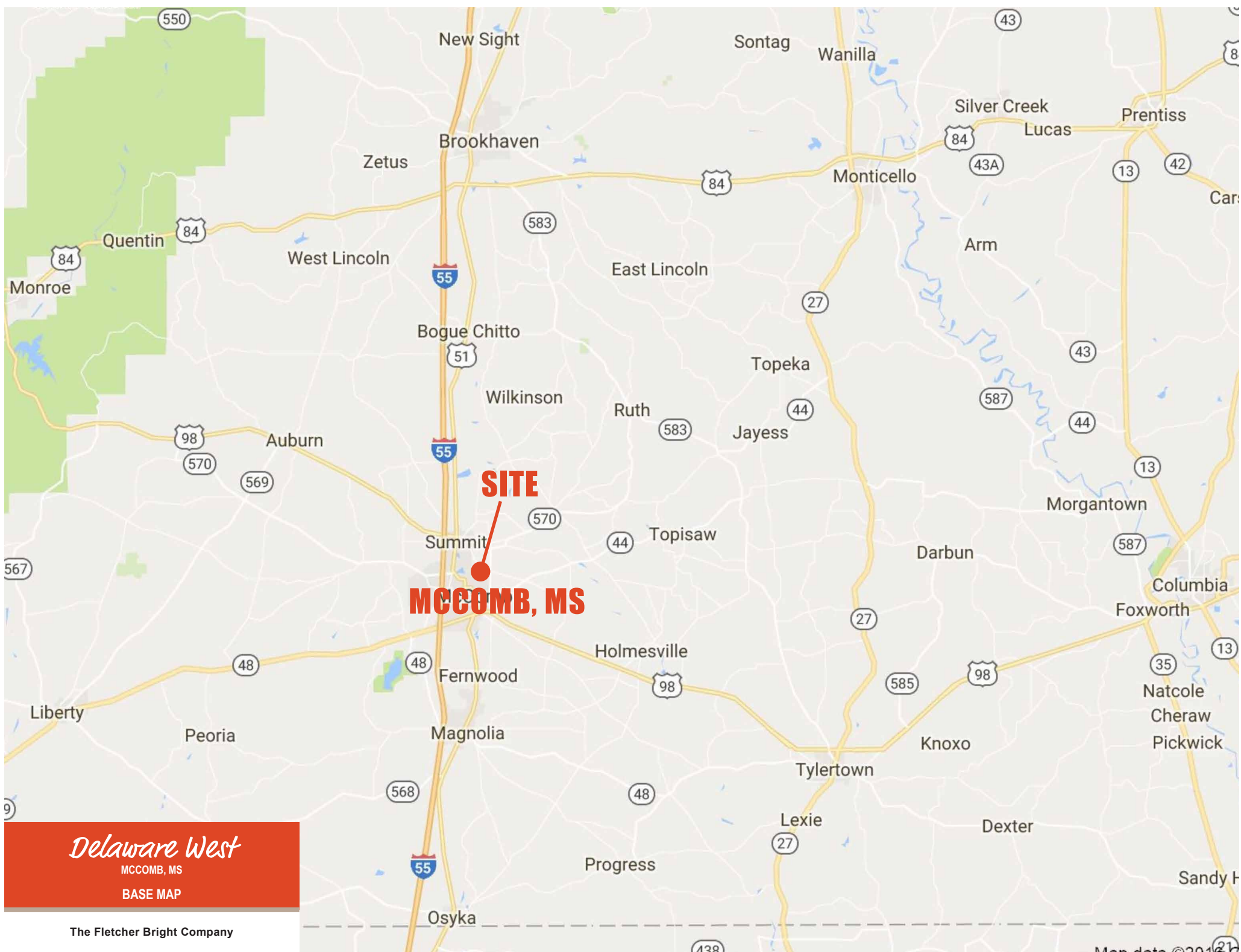


Delaware West Shopping Center

MCCOMB, MISSISSIPPI



- *Delaware West*
shopping center features McComb Market Grocery, Sears, & Family Dollar. The center has a total of 54,450sf gross leasable area
- It is located at the corner of Delaware Ave & West Ave
- Leasing Information:
Jones Graham
800-446-3289



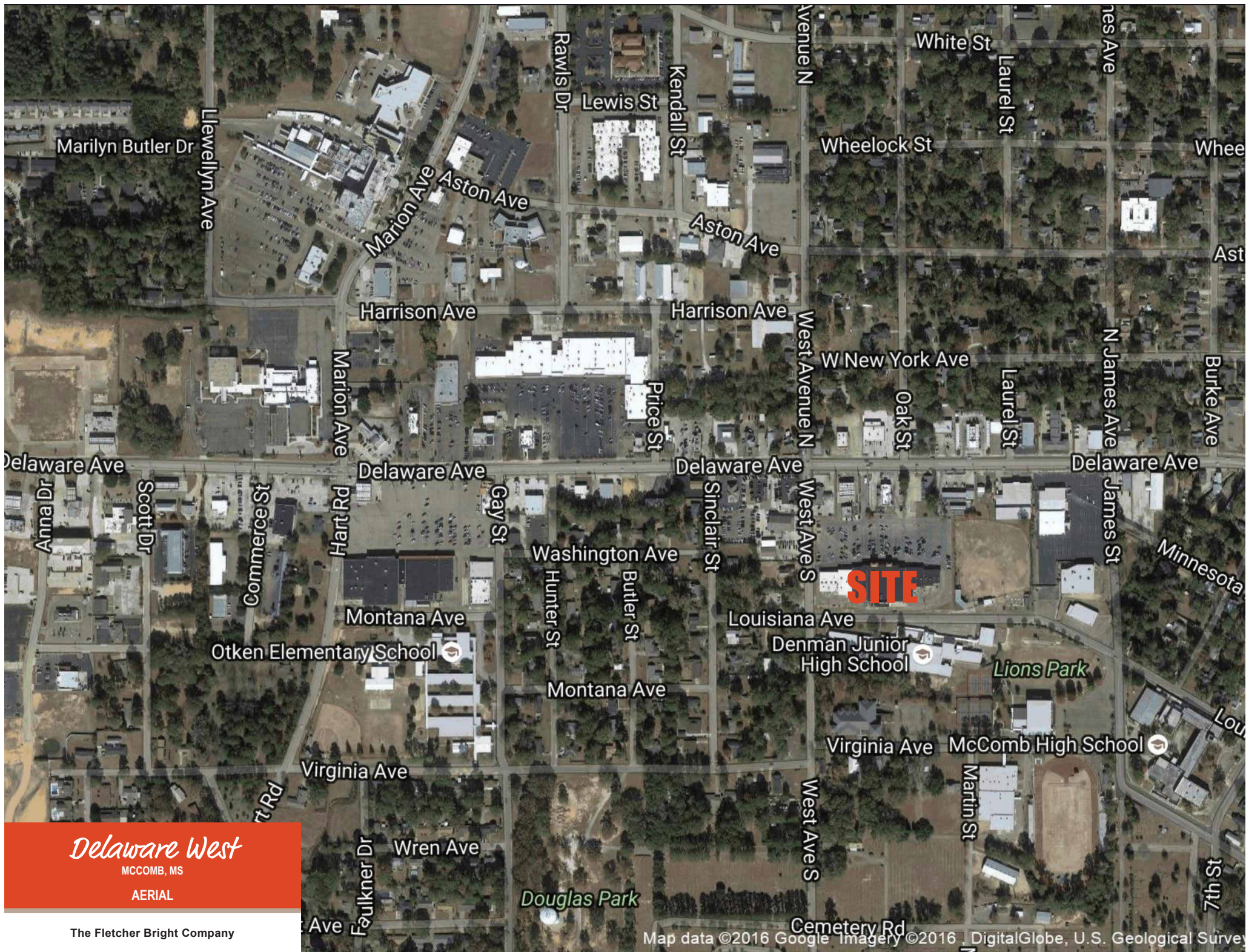
Delaware West

MCCOMB, MS

BASE MAP

The Fletcher Bright Company

Map data ©2016



SITE

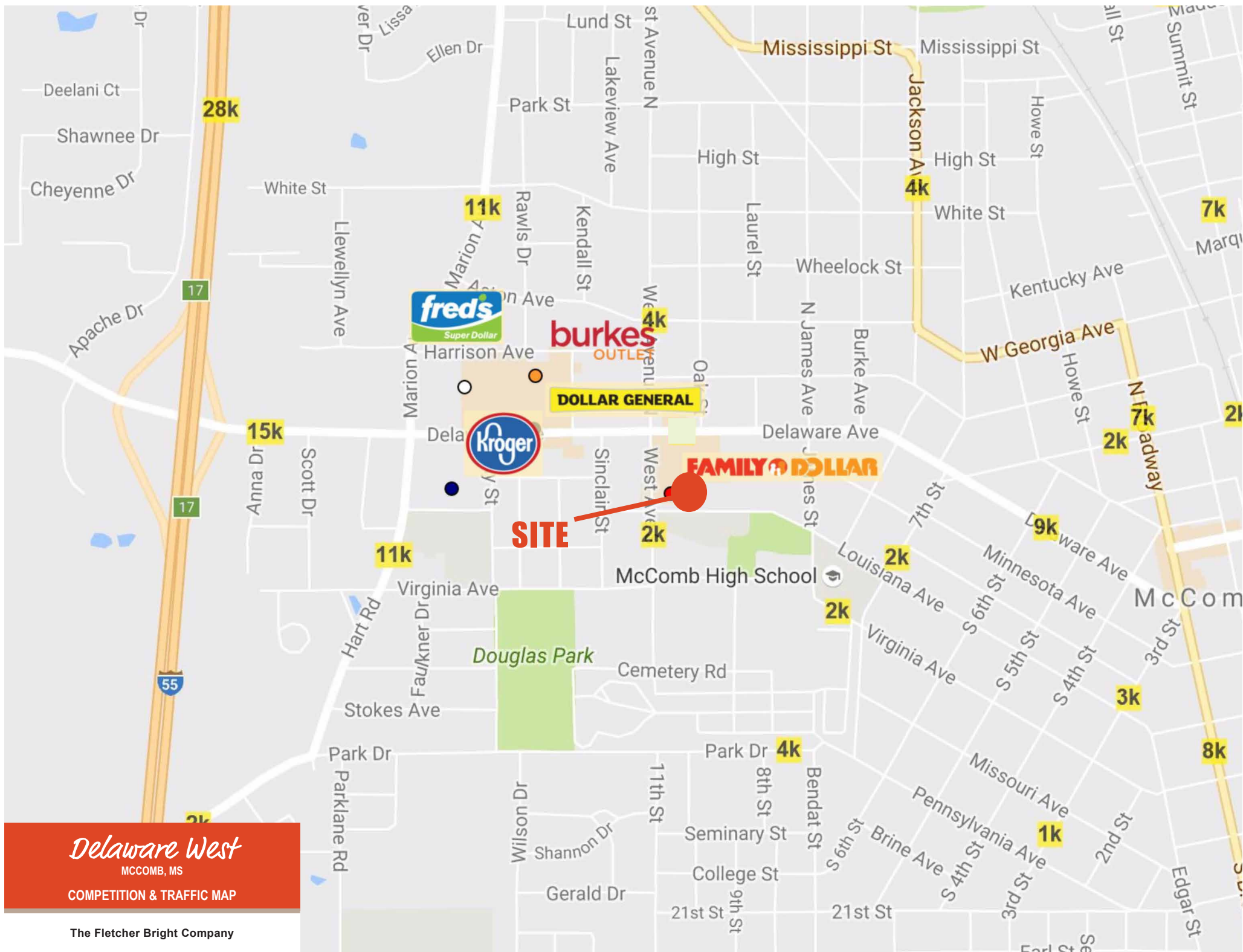
Delaware West

MCCOMB, MS

AERIAL

The Fletcher Bright Company

Map data ©2016 Google Imagery ©2016 DigitalGlobe, U.S. Geological Survey



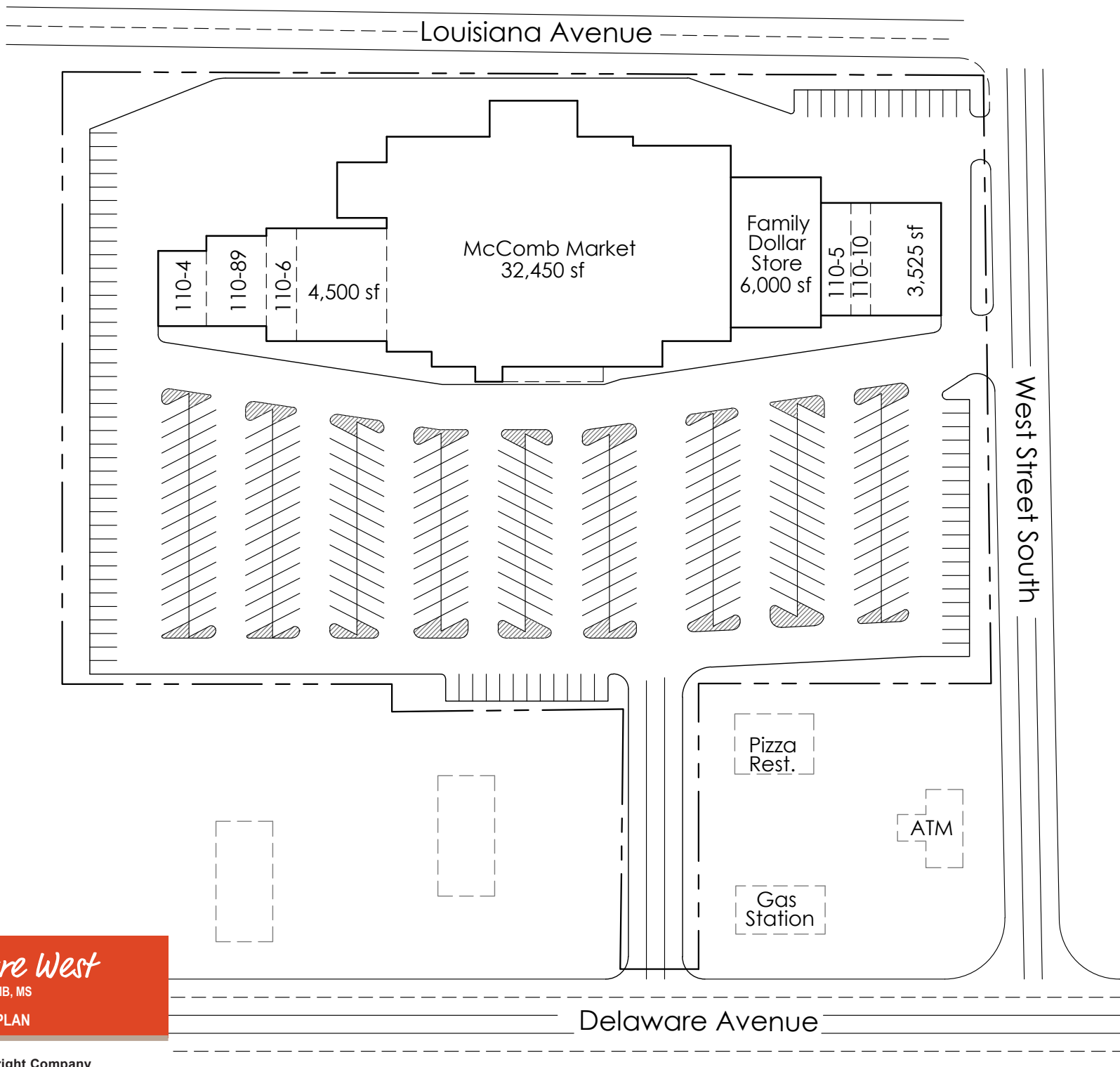
Delaware West Shopping Center

MCCOMB, MISSISSIPPI



	1 Mi Ring	3 Mi Ring	5 Mi Ring
2016 Population	4,973	17,559	23,861
2016 Households	2,206	7,009	9,372
2016 Avg HH Income	\$49,908	\$46,382	\$48,512

1211 Delaware Avenue, McComb, MS 39648



Delaware West

MCCOMB, MS

SITE PLAN

The Fletcher Bright Company

This is a preliminary site plan subject to modification by the developer.

McComb is a city in Pike County, Mississippi, about 80 miles (130 km) south of Jackson. As of the 2010 census, the city had a total population of 13,644. It is the principal city of the McComb, Mississippi, Micropolitan Statistical Area.



LOCATION

McComb was founded in 1872 after Henry Simpson McComb of the New Orleans, Jackson and Great Northern Railroad, a predecessor of the Illinois Central Railroad (now part of the Canadian National Railway), decided to move the railroad's maintenance shops away from New Orleans, Louisiana, outside of the attractions of that city's saloons. Main Street has the downtown's shops, attractions, and business. The railroad purchased land in Pike County, and three nearby communities, Elizabethtown, Burglund, and Harveytown, agreed to consolidate to form this town.

DEMOGRAPHIC INFORMATION

As of the census of 2010, there were 13,644 people and 5,073 households in the city. The population density was 1,184 people per square mile (424/km²). There were 5,825 housing units at an average density of 500.6 per square mile (193.3/km²). The racial makeup of the city was 66.29% African American, 31.22% White, 0.91% Asian, 0.17% Native American, 0.05% Pacific Islander, 0.53% from other races, and 0.82% from two or more races. Hispanic or Latino of any race were 1.41% of the population.

EDUCATION

The City of McComb is served by the McComb School District. There are 7 schools in the district, Otken Elementary, Kennedy Early Childhood Center, Higgins Middle School, Denman Jr. High School, McComb High School, Business & Technology Center, and Summit Academy. The McComb and the surrounding Pike County area has three separate school districts, three private schools, and a community college in the northern part of the county. St. Alphonsus Catholic Church is located in McComb and provides classes kindergarten through seventh grade. McComb is also the location of Parklane Academy, a K4 through 12th grade private college preparatory school. And Jubilee - Performing Arts - Center, a private school catered in the performing arts. It is the first of its kind in the Pike County Area. It is located in the central McComb region. Southwest Mississippi Community College is located seven miles north of McComb, and northeast of Summit, MS.

McComb High School is one of the 100 National Model Schools.