

Bennettsville Square

SHOPPING CENTER



BENNETTSVILLE, SC

Walmart Supercenter with
24,530sf Retail Space For Lease • Outlots Available

Fletcher Bright Company
423.755.8830



Meyers Brothers Properties LLC
404.252.1499

A Bright-Meyers Development Project

Bennettville Square

BENNETTSVILLE, SC

DON'T MISS THIS OPPORTUNITY TO HAVE
A PRESENCE IN THIS AMAZING MARKET!

- New shopping center featuring a Wal-Mart with 24,530sf of retail space for lease and outlots for sale
- Located on Hwy. 9



For Leasing Information Call:
800-446-3289

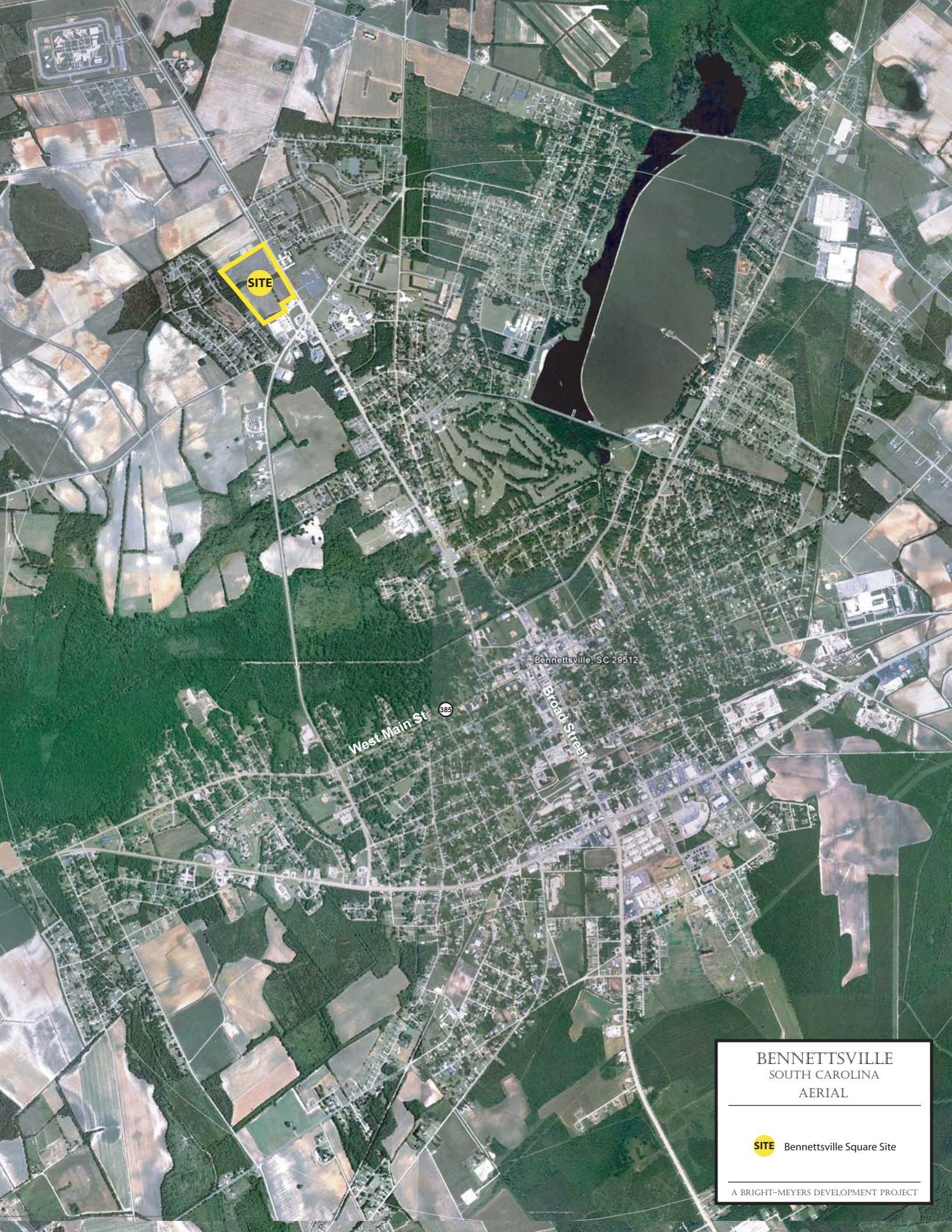
A Bright-Meyers Development Project

The Fletcher Bright Company
&
Meyers Brothers Properties, LLC

* The information contained in this brochure has been obtained from sources we believe to be reliable. However the developer makes no warranty or representation regarding the accuracy of the information.



BENNETTSVILLE SQUARE
BENNETTSVILLE, SC
BASE MAP
A BRIGHT-MEYERS DEVELOPMENT PROJECT



SITE

Bennettville, SC 29512

West Main St

365

Broad Street

BENNETTSVILLE
SOUTH CAROLINA
AERIAL

 Bennettville Square Site

A BRIGHT-MEYERS DEVELOPMENT PROJECT



727.520.8181
www.aerophoto.com

Wal-Mart Store #4457-00

Image # 120822 0152
Date 08.22.12

BENNETTSVILLE, SC
COMPETITION MAP

PW

Piggly Wiggly

BL

Bi-Lo

MW

Maxway

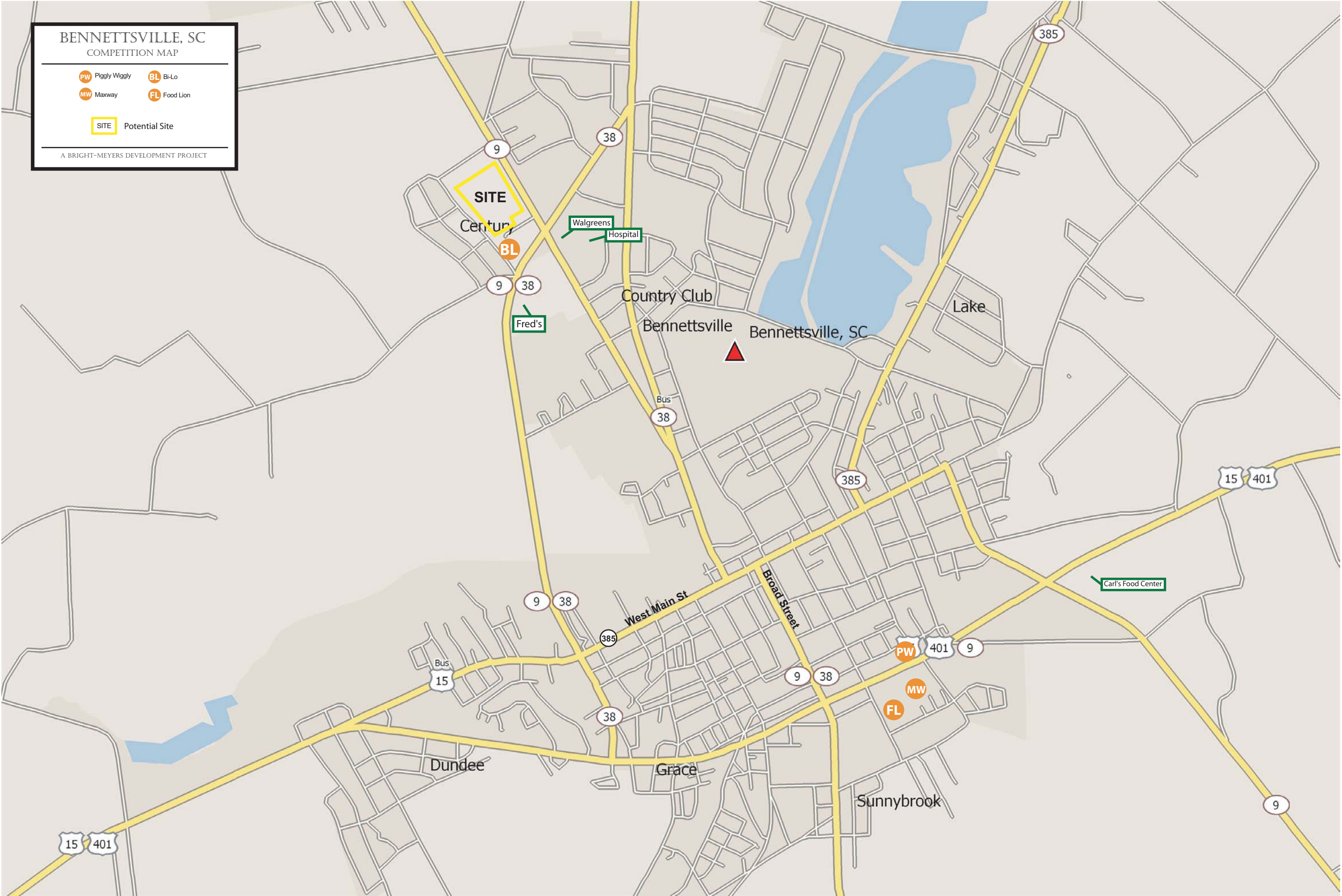
FL

Food Lion

SITE

Potential Site

A BRIGHT-MEYERS DEVELOPMENT PROJECT



BENNETTSTVILLE, SC

TRAFFIC MAP

PW

Piggly Wiggly

BL

Bi-Lo

MW

Maxway

FL

Food Lion

SITE

Potential Site

12,300

Traffic counts are indicated by yellow boxes

A BRIGHT-MEYERS DEVELOPMENT PROJECT

This map illustrates the traffic network in Bennetttsville, SC, highlighting major thoroughfares and potential development sites. The map features a grid of streets with major roads including US-15, US-401, SC-9, SC-38, and SC-385. Traffic counts are indicated by yellow boxes along these routes, with values ranging from 900 to 10,700. A yellow box labeled 'SITE' is located in the northwest quadrant, near the intersection of SC-9 and SC-38. Other labeled locations include Dundee, Grace, Sunnybrook, and the Country Club. Key landmarks such as Walgreens Hospital and Carl's Food Center are marked. The map also shows a large lake in the northeast and a red triangle marker near the center. A legend in the top-left corner defines the symbols for retail locations (Piggly Wiggly, Bi-Lo, Maxway, Food Lion), potential sites, and traffic count indicators. The map is part of a Bright-Meyers Development Project.

Bennettsville Square

BENNETTSVILLE, SC

SITE DEMOGRAPHICS

	2 Mi Ring	3 Mi Ring	5 Mi Ring
2012 Population	6,769	10,607	19,952
2000 Population	7,017	10,662	19,699
00-12% Pop Change	-3%	-.5%	1%
2012 Households	2,760	4,248	8,025
2012 Avg HH Income	\$43,467	\$43,351	\$42,417



Coordinates: 34.8748, 79.7035

Established as the county seat of Marlboro County on December 14, 1819, Bennettsville continues to serve as the political and economic center for the county.

In 1819, the town of Bennettsville was established and named in honor of Thomas Bennett, then governor of South Carolina. Bennettsville quickly grew into one of the richest agricultural communities in the state. Legend has it that the land is so rich it once was sold by the pound instead of the acre. The State of South Carolina recognized Bennettsville's prominence by designating it South Carolina's first "G.R.E.A.T. Town" (Governor's Rural Economic Achievement Trophy).

Bennettsville's affluent past and lifestyle are captured in the Victorian and Greek revival homes and public buildings. Bennettsville was occupied by Union forces in 1865. The Jennings-Brown House and original Marlboro County Courthouse served as headquarters for Union Major General Frank Blair and General William Tecumseh Sherman during the Civil War.

Today Bennettsville is home to cultural venues, recreation activities and a lifestyle comparable to none.

Location: Bennettsville is the geographical axis between Columbia and Fayetteville (I-20 to 15-401 to Fayetteville) and Charlotte and Myrtle Beach (NC 74 to SC 52 to SC 9 to Myrtle Beach.)