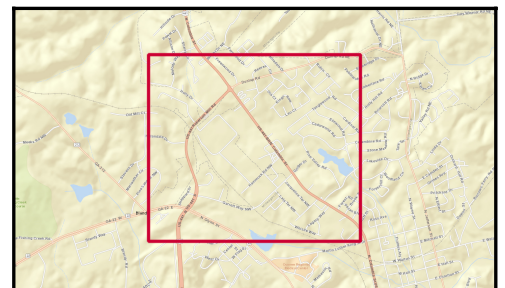
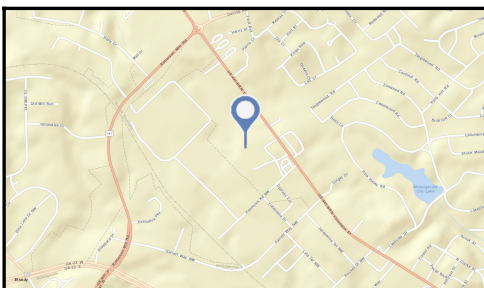
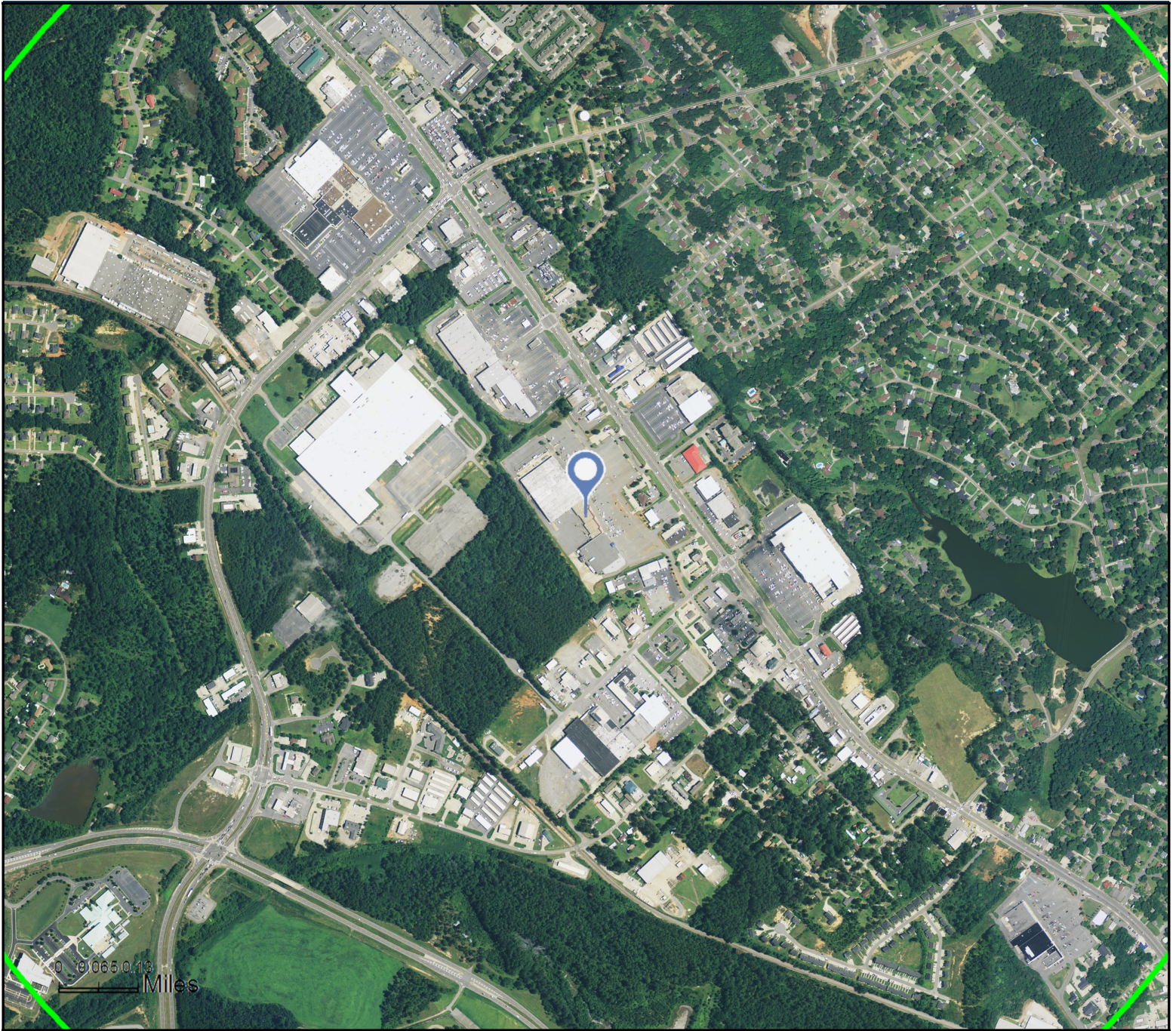




Site Map on Satellite Imagery - 1.6 Miles Wide

Town Central
1850 N Columbia St, Milledgeville, Georgia, 31061
Rings: 1, 3, 5 mile radii

Prepared by Esri
Latitude: 33.10266
Longitude: -83.25173



Source: ArcGIS Online World Imagery Basemap

February 18, 2016