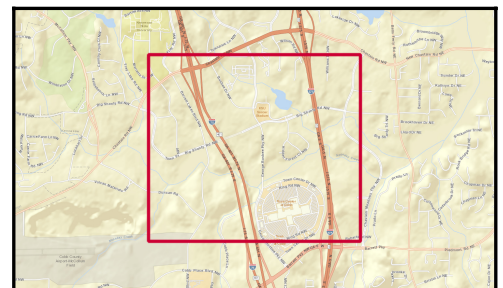
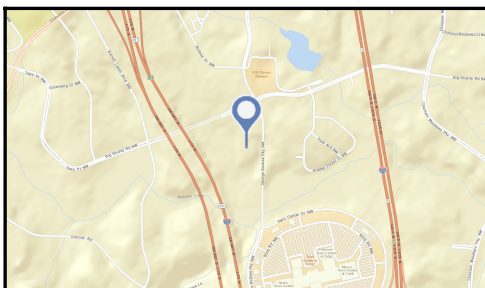




Site Map on Satellite Imagery - 1.6 Miles Wide

Noonday Creek Crossing
2930 George Busbee Pkwy NW, Kennesaw, Georgia, 30144
Rings: 3, 5, 10 mile radii

Prepared by Esri
Latitude: 34.02485
Longitude: -84.56873



Source: ArcGIS Online World Imagery Basemap

February 18, 2016