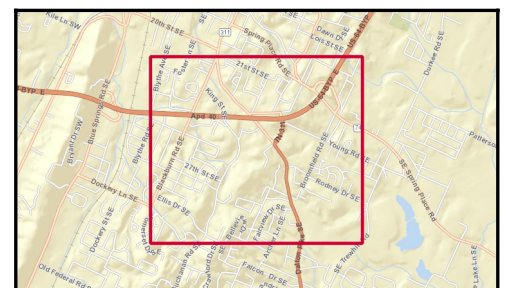
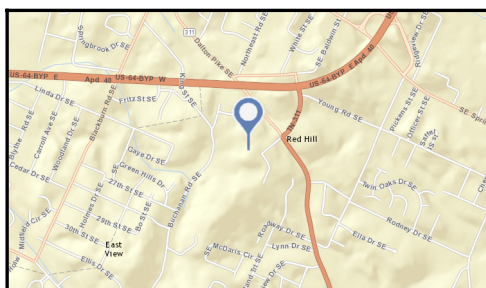




Site Map on Satellite Imagery - 1.6 Miles Wide

Sterling Pointe
2455 Treasury Dr SE, Cleveland, Tennessee, 37323
Rings: 3, 5, 10 mile radii

Prepared by Esri
Latitude: 35.12743
Longitude: -84.86848



Source: ArcGIS Online World Imagery Basemap

February 16, 2016